

EUROVERTICAL





EUROIMPIANTI coating lines

OUR HISTORY

We are an **Italian company** with **more than 45 years of experience** in the design and construction of **systems for coating** any metal surface.

After serving the needs of the Italian market, in the 1980s we began exporting our first coating systems to Europe, thus establishing our **ever-growing presence in the international market** as well.

At the same time, we enhanced our **close-knit Company management** with **highly skilled technical and sales professionals**.

Our group currently consists of over **80 employees** and **thousands of systems installed worldwide**.

We rely upon **production plants, sales offices** and **exclusive distributors** located in strategic commercial areas to offer an **attentive and complete service** to customers in **every country**.

For us, **our Company is like a family**, where **respect for people, environmental awareness,** and bold foresightedness are **fundamental principles**.

HOW WE WORK

We take care of each and every discrete project phase: **sales, consultancy, executive development, production, installation and testing**.

A **dedicated staff** approaches each project according to **our construction philosophy** of **modularity and flexibility**.

We applied the **serial production** logic to the individual components of our equipment, in order to build **functional systems** that are

optimally customized to every **customer's discrete needs**.

Our work does not end with the delivery of the system. We **establish a lasting and continuous relationship** with customers, providing them with the best **after-sales assistance**:

- **maintenance**
- **technical advice**
- **supply of spare parts**
- **staff training**



DEDICATED ASSISTANCE



INTERNATIONAL WARRANTY



ENVIRONMENTAL SUSTAINABILITY



RESEARCH AND DEVELOPMENT



TRAINED LOCAL STAFF



EUROVERTICAL

The vertical system for coating extruded profiles, ideal for obtaining maximum quality and productivity.



EURO90

The automatic and flexible solution that can be customized according to production needs and piece size.



KOMBY

The manual and flexible system, ideal for coating small batches of any size and shape.



EUROCAR

The step coating system, optimized for handling of heavy and bulky items.



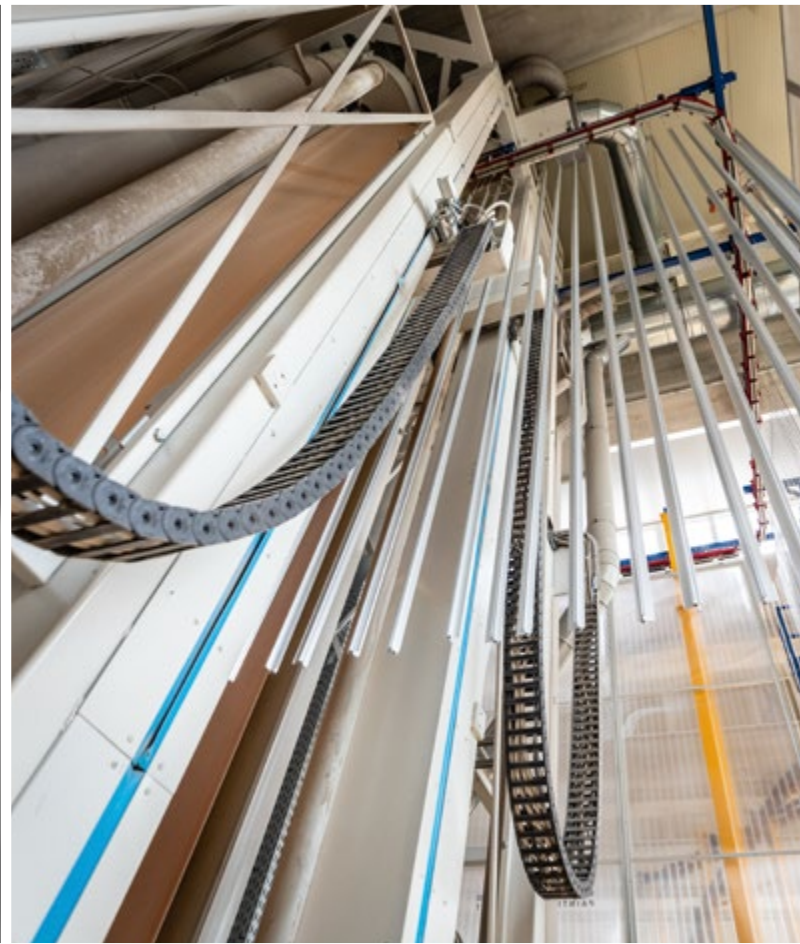
EUROHORIZONTAL

The coating system equipped with a Power & Free conveyor to make the best use of the available space.



EUROCOMPACT

The compact solution consisting of a powder coating booth and a polymerization oven.



PROCESSING CYCLE



LOADING AREA

Profiles are loaded onto a bench where operator perforate and hang them to the conveyor when profiles are horizontal.



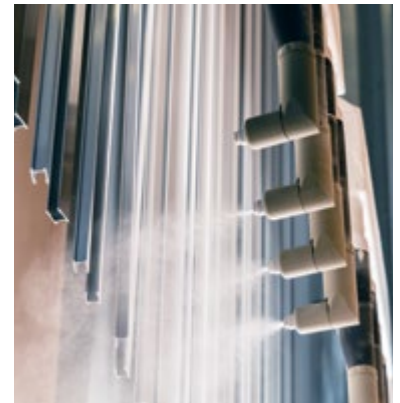
GRAVITY CASCADE PRE-TREATMENT

Profiles are pre-treated while hanging vertically by applying a gravity cascade process. The 100% stainless steel tunnels equipped with cascades ensure excellent surface preparation quality, efficiency, and ultra-low energy consumption.



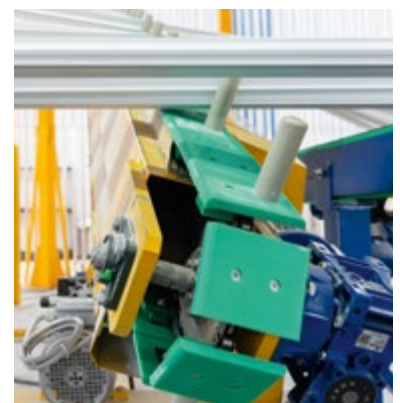
DRYING IN OVEN

When the washing stage is completed, the profiles are conveyed through a drying oven. The oven features air curtains that are perfectly sized to contain heat.



COATING APPLICATION

The Diamond powder coating booth features a symmetric design in every detail, ensures total versatility, and control over the coating applied. The coating area is suitable for profiles of any size and shape.



POLYMERIZATION IN OVEN

Polymerization occurs inside the oven where air recirculation and temperature are kept constant and controlled by a dedicated combustion chamber and fans.



COOLING

Once the process is completed, the profiles are brought by the peg descender back to a horizontal position and are conveyed to the unloading area, ready to be stored.

ACCESSORIES



AUTOMATIC WRAPPING MACHINE



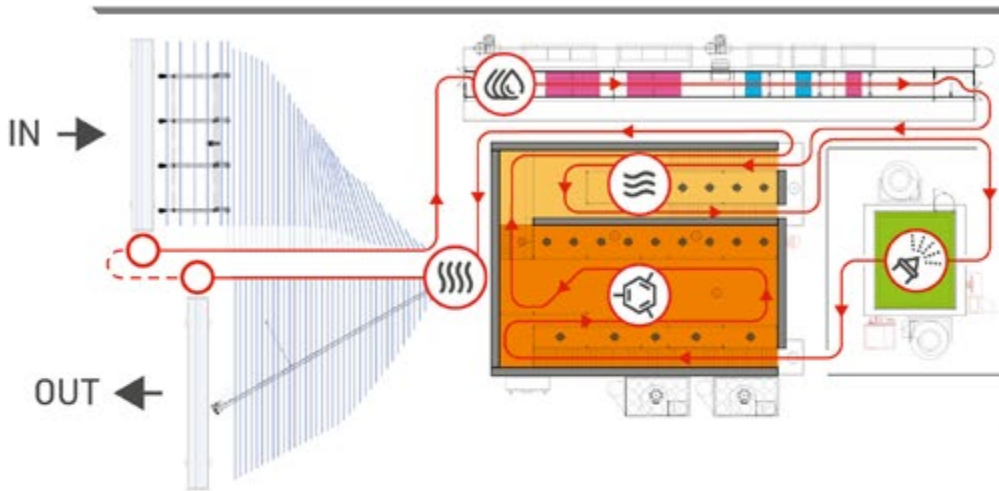
DESCENDER FOR LARGE PROFILES



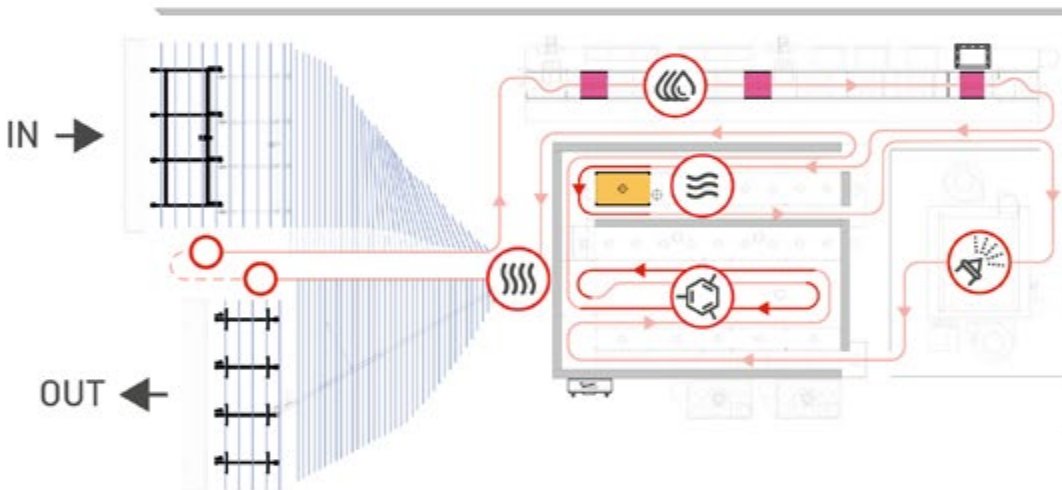
IN-LINE BRUSHING MACHINE

SPEED-UP SOLUTION

INITIAL INSTALLATION (PRODUCTION: 0.75 M/MIN)



UPGRADE IN 48 H (PRODUCTION: 1.5 M/MIN)



STRENGTHS



QUICK COLOUR CHANGE



MODULAR SOLUTIONS



ENERGY SAVING



RAW MATERIAL QUALITY

**PROFILES COATED/HOUR
NON-STOP WORK. NO INTERRUPTIONS!**

EUROVERTICAL	⊕ SUSPENSION PACE ⊖		
	⊕ SPEED	100 mm	133 mm
0,75 m/min	450	330	225
1 m/min	600	450	300
1,5 m/min	900	670	450
2 m/min	1200	900	600

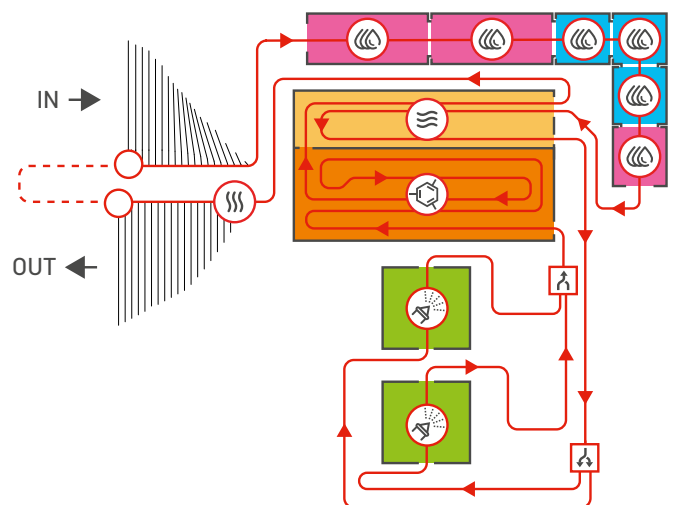
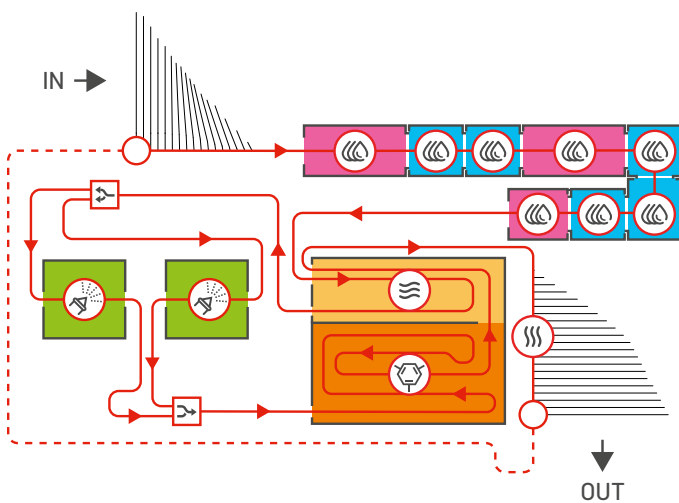
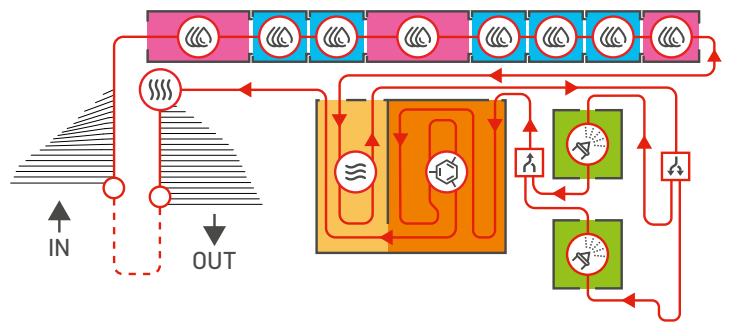
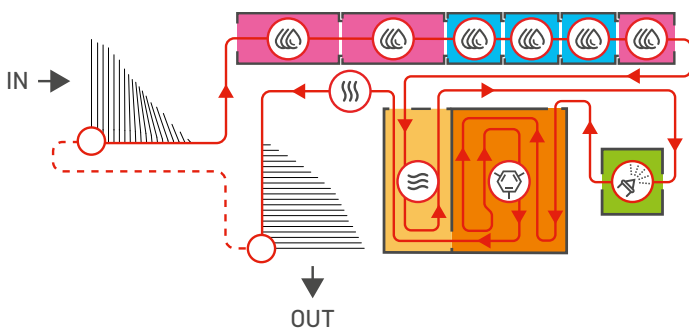
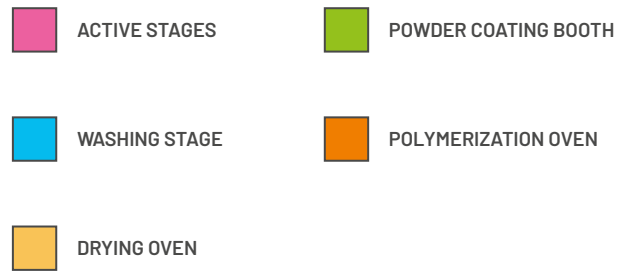
**OVERHEAD CONVEYOR
LOAD CAPACITY**



EXAMPLES OF OTHER CONFIGURATIONS

The **modular construction** allows customizing our standard solutions for **different uses**, needs and **production spaces**.

Here are some possible variants.



BRAZIL

Euroimpianti do Brasil LTDA / Balneário Rincão SC / phone +55.48.34432725

SPAIN

Euroimpianti SL / Vallirana (BCN) / phone +34.938.325083

GERMANY

Euroimpianti Deutschland GmbH / Donaueschingen / phone +49.771.921440

USA

Euroimpianti USA LLC / Miami / phone +1 954-673-0569

POLAND

Euroimpianti Polska SP. Z.O.O. / Bilgoraj / phone +48.603.506.026

www.euroimpianti.com



EUROIMPIANTI SRL

Via Cavour, 44 37067 Valeggio sul Mincio (VR) ITALY
phone +39.045.7950777 / info@euroimpianti.com

